



DL2 Integrated LED Loading Dock Arm

Innovative. Modern. Streamlined.

Model Numbers

24" Integrated LED Loading Dock Arm
DL2-SA-IL-24



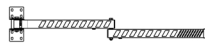
36" Integrated LED Loading Dock Arm
DL2-SA-IL-36



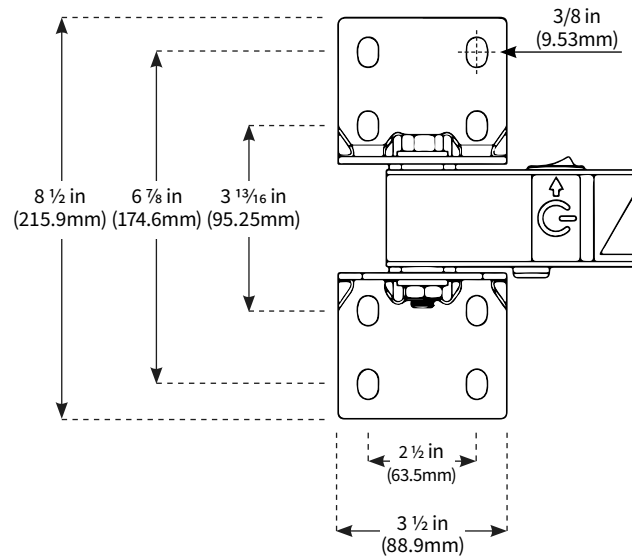
40" Integrated LED Loading Dock Arm
DL2-DA-IL-40



48" Integrated LED Loading Dock Arm
DL2-DA-IL-48



60" Integrated LED Loading Dock Arm
DL2-DA-IL-60



Specifications

Wattage	13.4W
Power Source	120V, 60Hz
Lumens	1331
Beam Angle	10°
CRI	≥ 75
CCT	5000K
Life	100,000 hours at 70% lumen maintenance
Material	Steel, polycarbonate, aluminum
Cord Length	6 ft
Cord Type	NEMA 5-15
Hole size	3/8 in
Mounting	3/8 in. lag bolts (not included) recommended for installation on concrete. Use appropriate installation hardware when installing on other substrates.
Compliances	cULus listed, RoHS Compliant, Rated for Damp Locations , LM79 report available upon request
Warranty	5 years

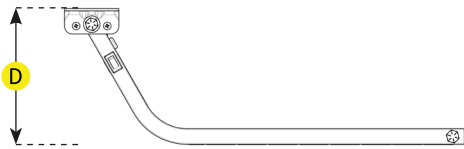
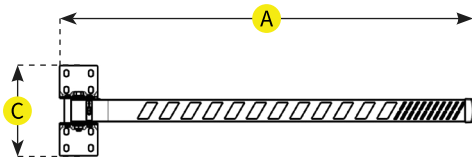
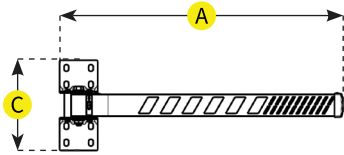




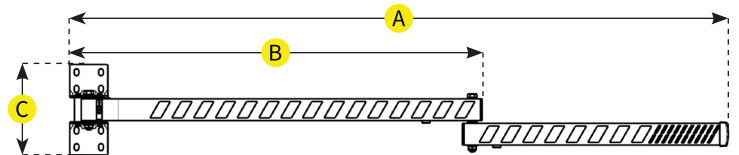
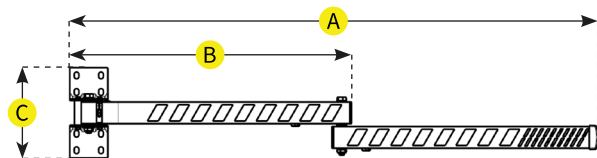
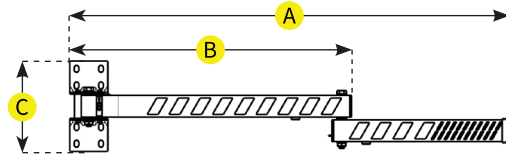
DL2 Integrated LED Loading Dock Arm

Innovative. Modern. Streamlined.

Single Arm Lengths



Double Arm Lengths



Model	A	B	C	D	Weight
DL2-SA-IL-24 (24" Single Arm)	24 in (610 mm)	N/A	8.5 in (216 mm)	8.5 in (216 mm)	7 lbs.
DL2-SA-IL-36 (36" Single Arm)	36 in (915 mm)	N/A	8.5 in (216 mm)	8.5 in (216 mm)	9 lbs.
DL2-DA-IL-40 (40" Double Arm)	40 in (1016 mm)	24 in (610 mm)	8.5 in (216 mm)	8.5 in (216 mm)	9 lbs.
DL2-DA-IL-48 (48" Double Arm)	48 in (1219 mm)	24 in (610 mm)	8.5 in (216 mm)	8.5 in (216 mm)	10 lbs.
DL2-DA-IL-60 (60" Double Arm)	60 in (1524 mm)	36 in (915 mm)	8.5 in (216 mm)	8.5 in (216 mm)	12 lbs.

